

SERVICEKIT

Salamander GENUINE parts

SKELECT02 ELECT



RIGHT PUMPS

Salamander Pumps 

Making
water
perform



Instructions **VIDEOLINK:**



Salamander Pumps Shower Systems Limited

Unit 2c Colima Avenue, Enterprise Park West,
Sunderland, SR5 3XE

Telephone: 0191 516 2002

Facsimile: 0191 548 4445

Email: sales@salamanderpumps.co.uk

www.salamanderpumps.co.uk



PLEASE NOTE:

By using the parts included in this pack to repair your pump, you will be invalidating any warranty you have on the pump.

Returns:

If you need to return this pack for any reason please ensure the original packaging and these instructions leaflets are returned also. If you have any questions or queries regarding this spares pack or any other pump related questions please contact us.

UK:

Salamander Pumped Shower Systems Limited
Unit 2c, Colima Avenue Enterprise Park West
Sunderland SR5 3XE

Tel: 0191 516 2002

Email: tech@salamanderpumps.co.uk

Eire:

MTA agencies Ireland Fearn House,
Unit 4 Jamestown Business Park
Jamestown Road Finglas,
Dublin 11

Tel: +353 (0)1 864 3363

Email: service@mtagencies.ie

WARNING! ENSURE PUMP IS ISOLATED FROM ELECTRICITY AND WATER SUPPLY. IF IN DOUBT CONSULT A COMPETENT TRADESMAN.

Pump should be serviced in horizontal position with couples disconnected and water and electricity supply isolated.

DO NOT RUN PUMP DRY. ALLOW WATER TO FILL PUMP TO LUBRICATE SEALS BEFORE STARTING. CHECK FOR LEAKS DURING TEST BEFORE BEING SATISFIED PUMP IS OK

INTRODUCTION

All RIGHT pump variants

Tools required :

- PZ2 Screwdriver
- 7mm Deep Socket
- Long nose Pliers
- Snips

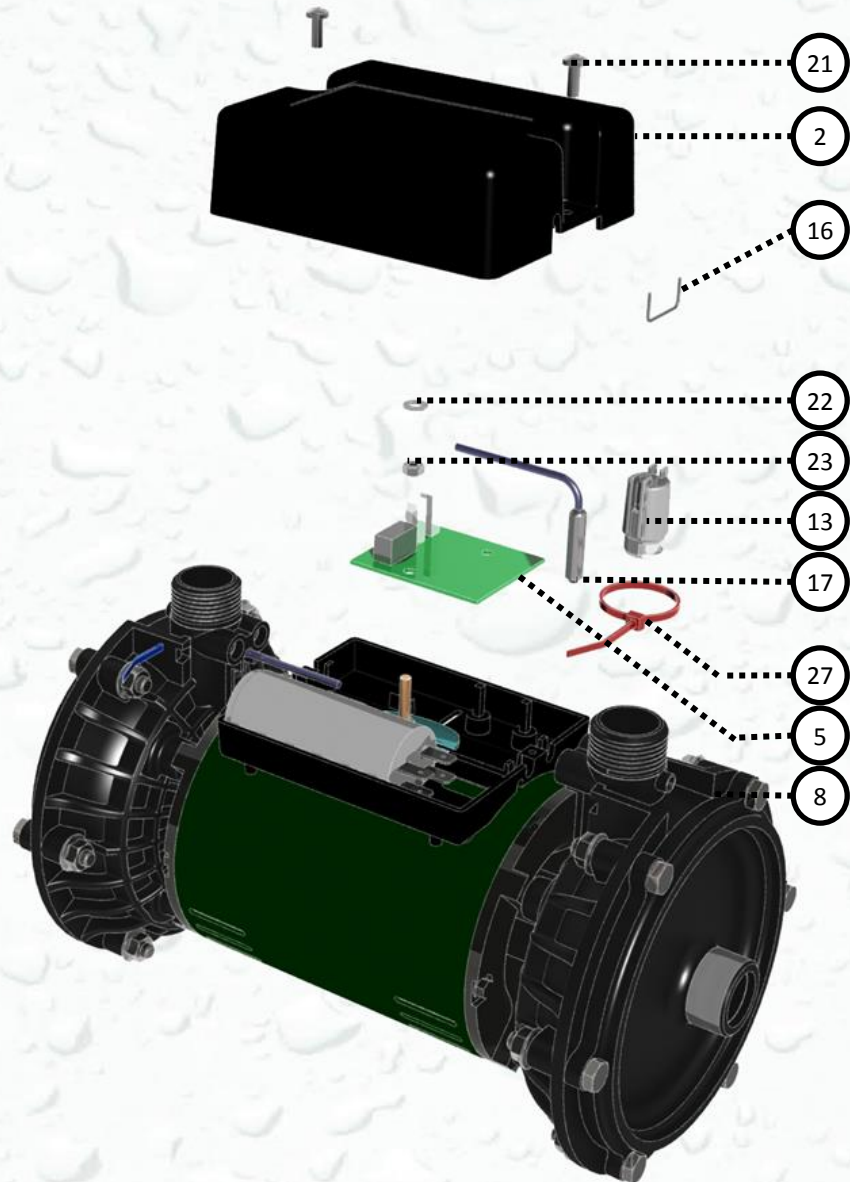
Parts in Service kit:

- Float- PFLOAT01(13) x 2
- PIS -FPUSHI01 (16) x 2
- Hall Effect sensor - EHALLE01 (17) x 2
- Cable Tie- FCABLE01(27) x 2
- Interface -EPCBUN02 (5) x 1
- Screw No:6 x1/2"- FSCREW 11 (21) x 2

SERVICE KIT

RIGHT PUMPS

SERVICE INSTRUCTIONS:



1. Remove Push In Stop (PIS) (16) using long nosed pliers and discard.
2. Remove float (13) noticing its orientation.
3. Repeat above steps for opposite pump side if required.
3. Remove Junction Box (JB) lid screws (21) using PZ2 screwdriver and discard.
4. Remove JB lid (2) and retain.
5. Disconnect Hall Effect (HE) sensor lead (17)
6. Snip cable tie that secures HE sensor to Outlet(8) note its orientation and remove. Discard both.
7. Repeat above steps for opposite pump side.
8. Disconnect mains and motor cables noting their orientation.
9. Remove M4 Nut(23) and M4 washer(22) using 7mm deep socket.
10. Remove PCB interface (5)
11. Fit new PCB interface
12. Secure with M4 Nut and washer and tighten to 1.95Nm +/- 0.15Nm
13. Insert new HE sensor (17) into inner housing and secure with cable tie. Snip excess off.
14. Insert Float (13) into inner in the same orientation as removed ensuring it engages with float guides and moves freely.
15. Insert PIS to stop position.
16. Repeat above steps for opposite pump side.
17. Reconnect both HE sensors and mains ,motors cables as per diagram. Ensure cables are routed via Junction box base cable slots.
18. Refit Junction box lid checking no cables are trapped.
19. Re-secure JB lid screws to hand tight.
20. Reconnect couplers ensuring filter and rubber washers are seated correctly. Service is now complete and ready for Test.

